



# NOTICE D'EMPLOI

*Aspirateur collecteur*



**T21095**

**GLS550H**



Yvon Béal 21, Av. de l'agriculture - B.P. 16  
Z.I. du Brécon 63014 Clermont-Ferrand Cedex 2  
Tél: 04 73 91 92 51 Téléphone: 04 73 90 23 11  
www.yvonbeal.fr Email: info@yvonbeal.fr  
R.C. B 304 973 886 - SIREN 304 973 886

**01-000007-050217**



**To our customer**

Read this manual before using your collector. This manual provides the information necessary for operating your tractor safely and properly.

For safe operation, it is important to read and understand this manual in which you will find all safety precautions to be taken. Therefore, all safety instructions should be observed during operation.

The collector that you have purchased has been manufactured carefully and in order to gives you the most satisfaction. As with every mechanical engine, it needs to be cleaned and taken care of. Lubricate it as indicated. Follow the safety instructions you will find in this manual and on the safety decals on the collector, the mower and the tractor.

Call on your ISEKI dealer for maintenance, original ISEKI spare parts and for any questions you might have. Use only ISEKI spare parts. The use of other than genuine ISEKI spare parts might void any liability and warranty by ISEKI. Please note the model number and the serial number on the dots.

**MODEL:** .....

**SERIAL NUMBER:** .....



Give this information to your ISEKI dealer when ordering parts. It is the company policy to improve the products whenever it is possible and practical to do so. We reserve the right to modify and improve our products at any time without recurring any obligation to make such changes on products manufactured previously.

Therefore, illustrations might vary slightly for your tractor because of such modifications made before manufacturing your tractor.

Reference to right and left sides or to front and rear of the tractor are determined by facing forward while sitting in the operator's seat.

## SAFETY

- \* Check if the machine is in good working condition before operating it.
- \* Check if all safety covers, screens, lids and the suction tube are in place and in good state.
- \* Periodically checks the torque of all fasteners.
- \* Never modify the tractor engine tuning; do not boost the engine.
- \* Do not operate the machine in areas where you cannot keep other persons or animals at a distance at which they cannot be hurt by projecting objects.
- \* If your tractor is equipped with a ROPS device, wear a safety belt.
- \* Do not allow passengers on the tractor.
- \* Check if nobody or nothing is standing behind you when driving backwards.
- \* When climbing up a slope, does it as slowly as possible. Never stop or start abruptly on slopes.
- \* The tractor will have a totally different centre of gravity when equipped with a collector, which diminishes its operating capacity on slopes. Do not climb a slope when the collector is full.
- \* Reduce your speed on slopes and when turning sharply in order to avoid loss of control.
- \* Be careful not to let slip the machine sideways when travelling along soft shoulders or ditches.
- \* Be on your guard for holes or other folds in the surface when working in bumpy areas.
- \* Disengage the mower and the collector, stop the engine, apply the parking brake, remove the starter key and wait until the complete stop of the moving components, before servicing the tractor.
- \* Do not allow anyone in the driver's seat when servicing the tractor.

In some of the illustrations shown in this manual, safety covers, panels, lids or even the suction tube may have been removed for clarity. Never operate the machine without these safety devices.

- \* Learn how to stop the machine in case of emergency. Read this manual together with the manual of the tractor and the mower.
- \* Never authorise another person to operate the machine without him/her having read and understood the manual.
- \* Never authorise children to operate the machine.
- \* Always wear appropriate and tight fitting clothing to avoid clothes being dragged into the moving parts of the machine.
- \* Always wear protective devices for your head, your eyes, your ears, your hands and your feet during operation.
- \* Thoroughly inspect the area where the machine is to be used and remove all stones, sticks and other debris that might be projected thus causing injuries or damages.
- \* Operate the machine only in daylight or using a good light source.
- \* Check if the safety decals are in place and well legible.

The warning **IMPORTANT** is used in this manual in order to attract your attention to the possibility of component damage if the instructions are not followed. The warnings **WARNING**, **ATTENTION** and **DANGER** are used – together with a safety alert symbol (a triangle with an exclamation point) in order to indicate the degree of danger for your safety.



This safety alerts symbol is used to make you aware of danger: your safety is involved.



Identifies safe operation practices or indicates unsafe conditions that could result in personal injury.



Describes a condition where failure to follow the instructions could result in severe personal injury or death.



Designates a condition where failure to follow the instructions or to heed the warning will most likely result in severe personal injuries or death.

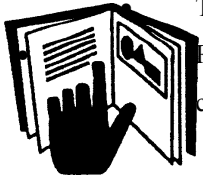


DANGER



ATTENTION

## TO THE ISEKI DEALER



The ISEKI dealer is responsible for the assembly, the installation and the start up of the collector. Read this manual and the safety instructions carefully. Check the pre-delivery and the delivery checklist below for eventual modifications and adjustments before delivery.

### PRE-DELIVERY CHECKLIST

- Check the mountings and state of all safety covers, screens and safety devices.
- Check the mounting and legibility of the safety decals. Replace if necessary.
- Check all fasteners and torque as described in the chart at the end of the manual for the values are not indicated.
- Lubricate all grease nipples.
- Check the correct functioning of the machine.

### DELIVERY CHECKLIST

- Show the customer how to put the tuning.
- Explain the importance of lubrication and show the lubrication points.
- Show all safety switches, screens, safety devices, lids and their options.
- Hand the manual to the customer, and ask him to read and understand it thoroughly.
- Explain the customer that this machine can only be driven on a public road if it is equipped in compliance with the applicable traffic regulations.





## Equipment

### 33.1713

Blower with fan D 440, incl. shaft f. 3 pnt , Universal joint, PTO cover, Intake blower, Flexible and Inlet, fitting on. GLS 550 (Low-dump), Manual

### 30.620

Grass- and leafcontainer GL 550 H, incl. 2 in a frame mounted Containerparts, Hydr.-cylinder, 2 liftarms, 2 Parallel hook, closing system, Gasspring, canal, net, cover

## Options

Tube with mower outlet for Front- and Midmountmower

Accessories For Manual work

Accessories for leafcontainer LS 100

## Technical Data

Lenght	Height	Width	Blower	Housing	RPM	Dump.Height
950	1300	1500	110 kg	170 kg	540 U/min	1,90/2,00 m



Manufacturer



ID.plate



RPM





## Preparation of the tractor

Equip the tractor with the double acting valve. Tyre pressures need to have same values. The 3 point linkage need to be adjusted.  
PTO rpm need to be 540 rpm

## Assembly - Start up

The container will be delivered in 3 parts

1. Blower
2. Frame
3. Box wit plastic parts

The assembly is written uderneath. Assembl the container on a flat surface , floor.

## Mounting of the collector on the tractor

### Preparation

Put the liftarm in the correct position.

For the Tractors: TM-TF liftarm in the left position (driverseat) en secure with a pin.



For all other tractors put the liftarm to the right (driverseat ) and secure with a pin.

Slowly back up the tractor to the container and stop the engine

Connect the liftarms with the tractor and secure

Connect the upperlink , make sure that the collector is in a straight position .

Connect PTO.

Connect hydraulic.

## Removing the blower

To remove the blower work in opposite way



Important

The rear door need to be closed . All operation levers in neutral.  
Make sure that the 3 point linkage is in the correct position.  
Be aware for injuries by assembly or disassembly.  
Don't allow any person between tractor and collector.

## Important

Be sure to connect correctly the universal joint ; serious damage may be the result if the universal joint is too long .Make sure that the universal joint is not too short this could cause injuries and risk of mall functioning

## Universal joint lenght

Move the TXG to the collector. Take the universal joint and put the 2 parts near each other.  
The shaft may not be longer then the distance between tractor and collector. The overlap of the universal joint should be 60mm.

How to cut the universal joint?

Both parts ,of the profile and protection, need to be cut in the correct lenght.

Apply grease on the profile and slide both parts together

Mount the universal joint

**Attention:** USE ONLY THE DELIVERED UNIVERSAL JOINT. APPLY REGULARY GREASE

## Transport

The tractor and collector may only be transported in empty conditions  
For transport on a trailer or road use lightening kit.

## Emptying of the collector:

Emptying the collector is only possible with the container is in the upper position.  
To empty the collector use the handel , or if you installed a cabine use hydraulic valve

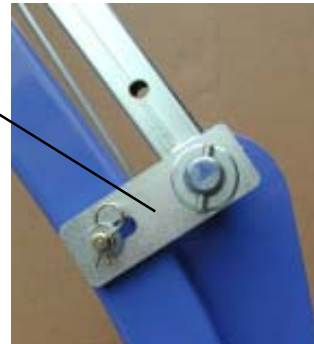
The GLS 550 H **can not be opened in the lowest position.**



Emptying or raising the collector is only possible if the piston is correct mounted.

Never raise the collector when the tractor is moving . Raising the collector when the tractor is in motion might cause damages to the collector .

Raise the collector to his highest position and secure , which prevent the collector from falling down



## Maintenance

### 1. Torque of the fasteners

Check the torque of all fasteners. The bolts and nuts can loosen by vibrations .

### 2. Universal joint

- a) Grease up the universal joint
- b) Keep dust free
- c) Apply grease to the universal joint profile

d) Replace damaged parts immediately

**Hydraulic:**

Check the hydraulic hoses . They should not be flattened , worn or torn.  
Replace if necessary

**Screen/net:**

Remove any grass clippings from the screens of the collector. Clean screen will insure good collecting and complete filling performances

**Belt:**

Check the state of the belt after the first 8 hours  
Afterwards check the tension on the belt every 50 hours



**State of the blower**

Check the blower fins. They should not be twisted , damaged or dented. A damaged fin could bring the blower out of balance.  
If the blower is out of balance please contact your ISEKI dealer

**Cleaning or after every mowing season or once a year**

- Clean the entire machine and pay special attention to the components where the clippings can accumulate: the collector intake, the discharge tube of the blower, the mower shooter and the collector itself. Eliminate all grass accumulations for they diminish the performance of the machine.

After having cleaned the machine with water, grease up the bearings and engage the blower in order to get rid of any water that might have accumulated in the blower.

- Check if the blower shaft turns freely and that there is no free play. Replace if necessary.

- Check the hydraulic hoses: they should not be flattened, worn or torn. Replace if necessary.

-Check the transmission oil: empty the oil tank and refill it with new oil. Replace the oil filter, check for any oil leaks, retighten the leak-off adapter and renew the flexible couplings if necessary.

## Assembly



1. Put frame onto the blower.  
Put the lift rod in the central position and lock with 6 bolts M12.  
Adjust the position of the lift rod according to the tractor

Figure: 1



2. To continue the assembly put the frame on the tractor

Figure 2



Figure 3



Figure 4

3. For Low-Dump you have to mount the canal (figure 3) on the blower . For High-Dump the canal (figure 4) is packed with the container

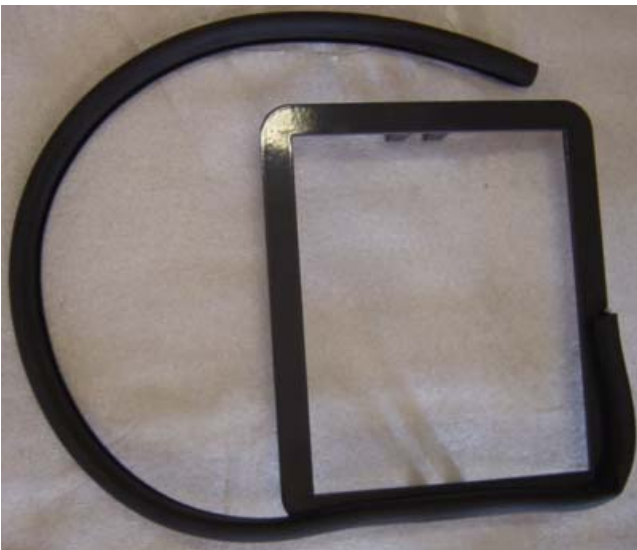


Figure 5



Figure 6

4. Mount the rubber joint on the ring and put the ring on the canal



Figure 7

5. On both ends of the blower please mount the rubber stopper.



Figure 8

6. Mount the front part of the container on the frame and at same time mount the hubarms left and right.





7. Adjust both of parallelarms at the same lenght:896-898mm

Figure 9



8. Mount the hydr.cylinder , parallelarm and hubarm on the U-profile , connect these with a pin.

Foto 10





Figure 11

9. Attach the canal and cloth on the support.  
As for the cloth you have to drill holes into the container and fasten with rivets.



Figure 12



Figure 13

10. Bring the container in his highest position to mount the securityplate (figure 12). ATTENTION: secure the container (figure 13). The securityplate is working trough the hydr.cylinder. Mount the plate so that when the container is up ,the plate is closing the canal ,en when we lower the container the canal is free.



Figure 14

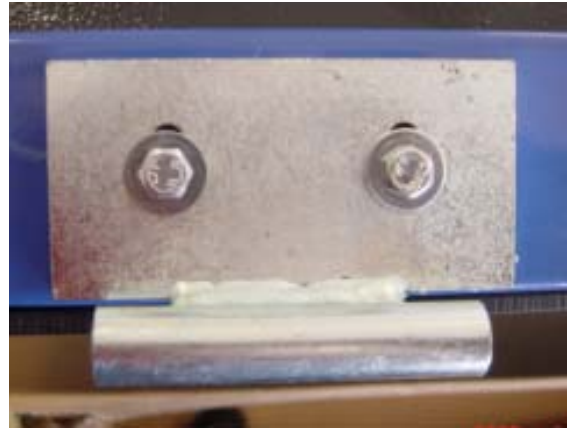


Figure 15

11. Mount on the door the hinges



Figure 16



Figure 17

12. Mount the door with hinges on the main frame



Figure 18



Figure 19

13. Close the door , Adjust the hooks to keep the door closed, be aware that the door is closed completely over the total length . Then tighten the hinges.

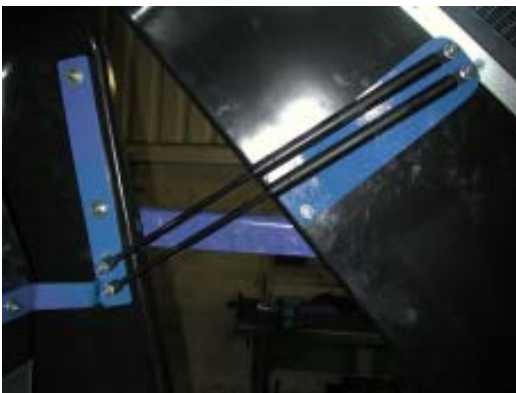


Figure 20

14. Mount on the innerside of the collector the double gasstrut.



Figure 21



Figure 22

15. Provide the doorlocker from a tensionroller

16. Mount the doorlocker and make sure that the door is completely closed. Adjust when needed



a.) Pull the arm as far as possible to the lowest position

b.) Adjust the tensionroller

c.) Adjust the parallelarms

Figure 23

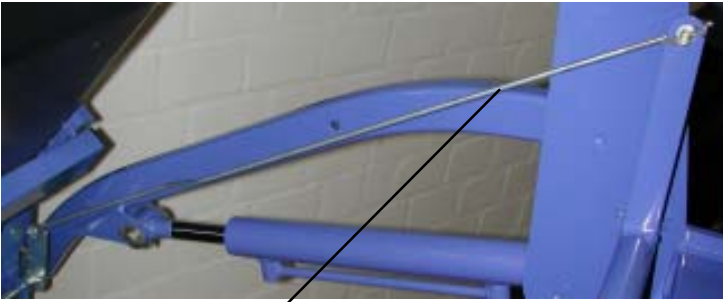


Figure 24

17. The opening rod need to be mounted ,on both sides ,so that the handel is in the upper position



18. Connect the hydraulic , make sure there are no leaks.

Figure 25

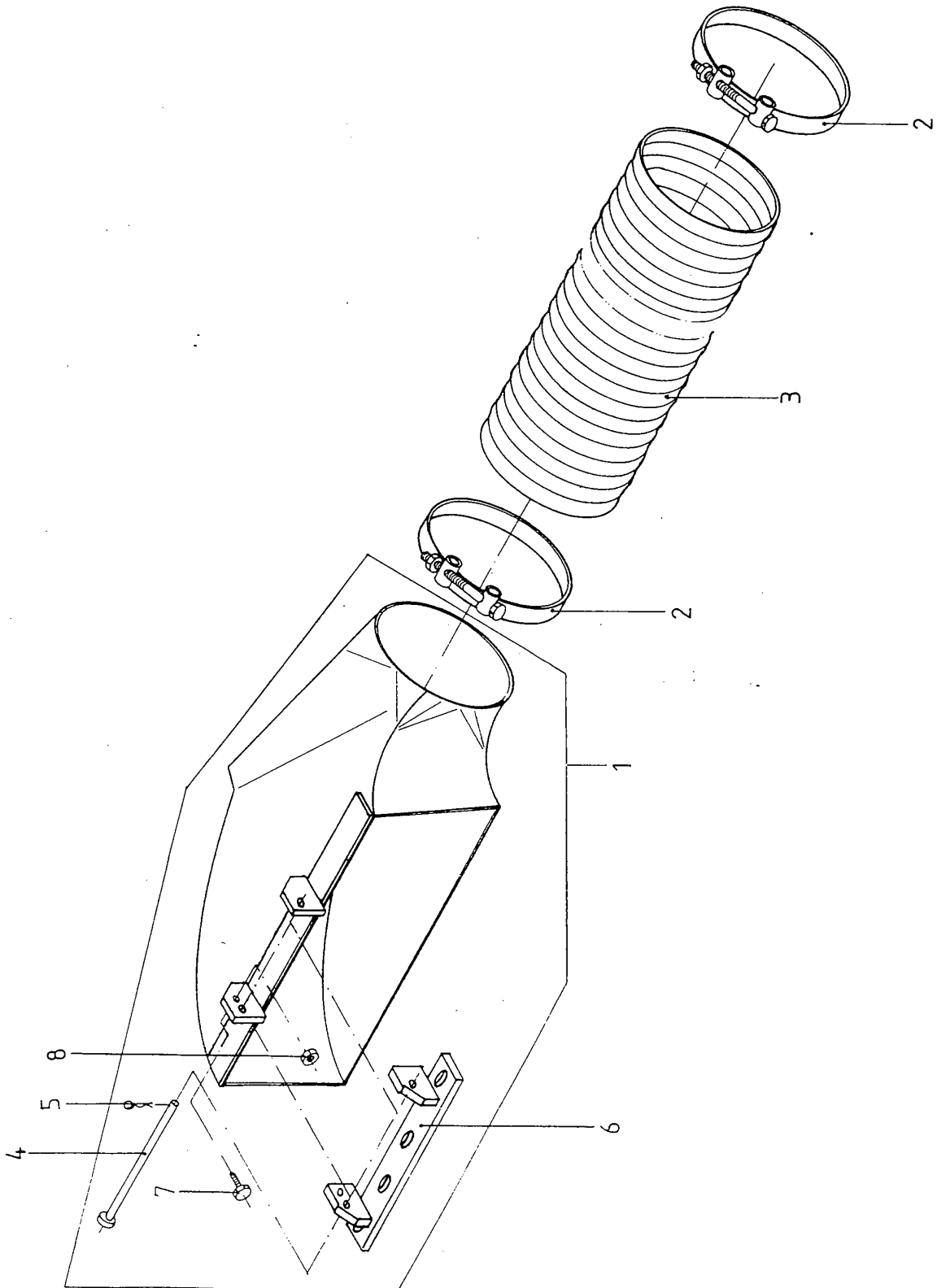


18. Adjust the canal .  
Make sure that there is no play between the canal and the container , tighten the M8 bolts

Figure 26

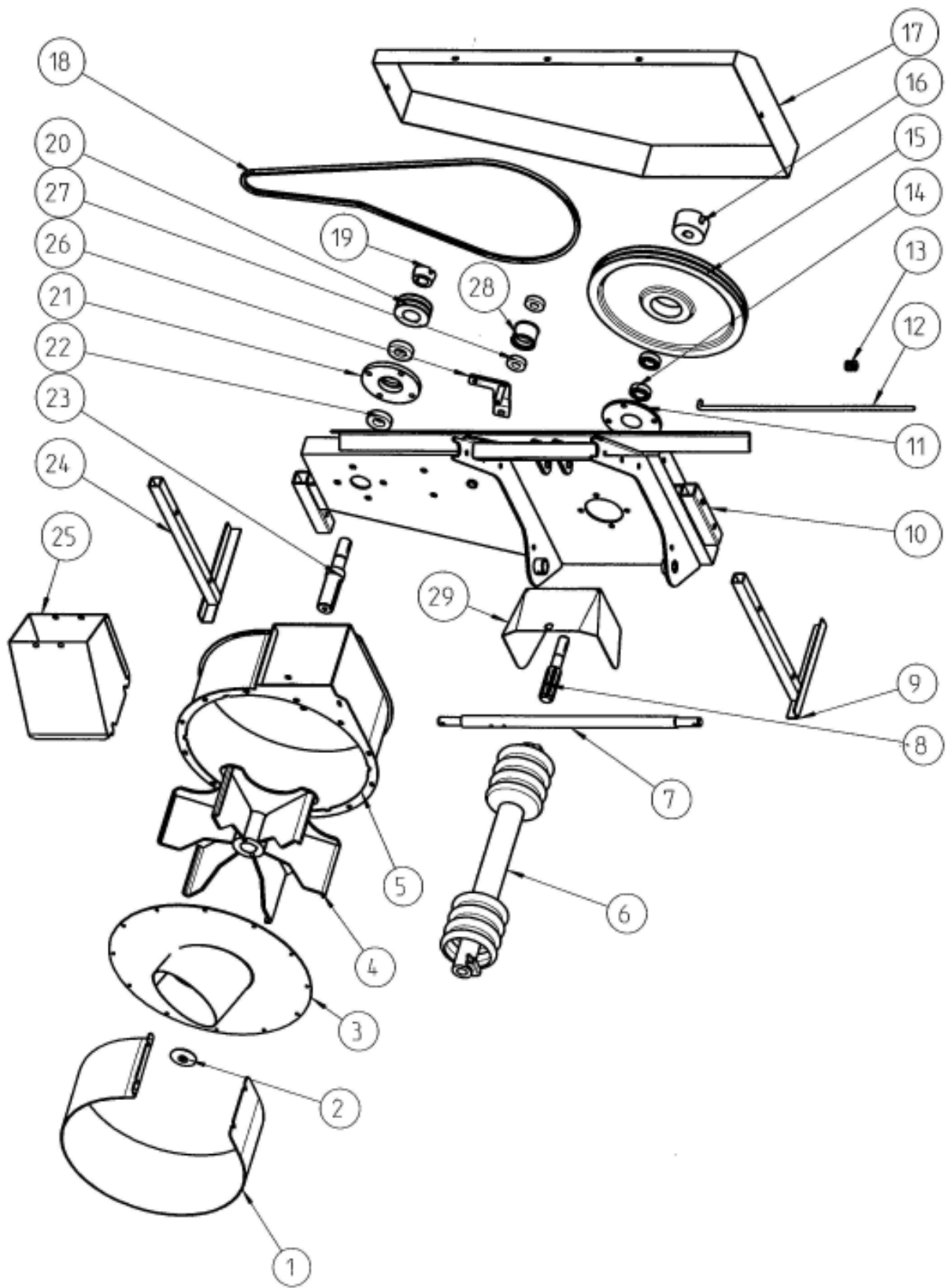
Art.-Nr.	ISEKI-Ersatzteilliste	Ausgabe 1
33.1830 / 33.1834 /	Ansaugschlauch für ZM 122 / 137 / 150 /	
33.1831 / 33.1832 /	160 und für FM 150 / 180 an SF mit	
33.1838 / 33.1839	Saugschuh	Juli 1998

Partlist moweroutlet



Pos.	Art.Nr.:	Bezeichnung/Omschrijving	3-Mär		
			48"	54"	60"
			33.1830	33.1834	33.1829
1	I-410-4005	Saugschuh 48"/maaieruitgang 48"/outlet 48"	1		
	I-410-4008	Saugschuh 54"/maaieruitgang 54"/outlet 54"		1	
	I-410-4007	Saugschuh 60"/maaieruitgang 60"/outlet 60"			1
2	I-318-1220	Bandschelle/spanriem/Strap	2	2	2
3	I-318-9120	Saugschlauch/Darm/Tube	1,2m	1,2m	1,2m
4	FM-050-40	Bolzen/Bout/Bolt	1	1	1
5	FM-045-50	Federstecker/Pin/Pin	1	1	1
6	I-245-0024	Halter f, Saugschuh/Houder/Support	1	1	
	I-245-0023	Halter f, Saugschuh/houder/Holder			1
7	S0933-M08-020	Sechskantschraube m8 x 20/zeskant schroef/ Nut M8x20	1	1	1
8	M0985-M08	Stopmutter M08/Nylonmoer M08/Nut M08	1	1	1

Art.Nr.:	ISEKI - Ersatzteilliste	Ausgabe1
33.1713	Gras- und Laubgeblöse	Mai 2001





**Grasvanger / Gras- und Laubgebläse GLS 550 für Schlepper(3/1/103**

Art.Nr.33.1713

<b>Pos.</b>	<b>Art.Nr.:</b>	<b>Bezeichnung/Omschrijving</b>	<b>Menge:</b>	<b>Bem.:</b>
1	I-401-2004	Verschleißring/ring/ring	1	
2	FM-044-20	Federscheibe/veerschijf/springwasher	1	
3	I-417-1032	Flansch f. Rotorgehäuse/ingang rotor/intake	1	
4	I-417-1040	Rotor D 440/rotor/Fan	1	
5	I-417-1031	Rotorgehäuse/rotorhuis/Housing	1	
6	I-440-0006	Gelenkwelle/aandrijf/as/universal joint	1	
7	I-215-2037	Unterlenkerachse/draagarm/lift rod	1	
8	I-480-2902	Profilwelle/Aftakas/PTO	1	
9	I-430-3062	Abstellstütze, links/stand links/stand left	1	
10	I-430-1039	Tragrahmen/frame/frame	1	
11	I-480-1003	Lagergehäuse/kogellagerhuis/Bearinghousing	1	
12	I-330-5590	Spannstange/spanstaaf/rod	1	
13	I-329-8235	Druckfeder/veer/spring	1	
14	6205 2 RS	Kugellager / kogellager/bearing	2	
15	I-330-2400	Tapერიემenscheibe Dw 400/Riemschijf/pulley	1	
16	I-330-4515	Taperspannbuchse / Spanbus/locking	1	
17	I-410-1026	Schutzblech f. Riemtrieb/Beschermplaat/plate	1	
18	I-331-2212	Keilriemen / Riemen/Belt	2	
19	I-330-4123	Taperspannbuchse / Spanbus/locker	1	
20	I-330-2085	Tapერიემenscheibe Dw 85/Riemschijf/Pulley	1	
21	I-480-1006	Lagergehäuse / Kogellagerhuis/Bearinghousing	1	
22	6206 2 RS	Kugellager / Kogellager/bearing	2	
23	I-480-2033	Rotorwelle /Rotoras/shaft	1	
24	I-430-3063	Abstellstütze, rechts / Stand rechts/stand right	1	
25	I-417-1036	Windkanal / Kanaal/canal		
26	I-480-0009	Lagerarm / Lagerarm/support	1	
27	1603-130-0030-0	Kugellager /Kogellager/bearing	2	
28	I-330-0050	Umlenkrolle / spanrol/tension roller	1	
29	I-410-1024	Zapfwellenschutz / Aftakasbescherming/PTO cover	1	
30	I-311-1240	Büchse 20/13/40 / bus/Washer	1	o.A.
31	I-313-1145	Bundbolzen 12x45/ bouten/bolt	2	o.A.
32	I-313-1976	Bundbolzen 19x76/ bouten/bolt	1	o.A.
33	I-532-1112	Kabelsatz f. Füllstandsmembrane/ membraamkabel/ Wiring	1	o.A.
34	I-420-3005	Halteplatte f. Füllstandsmembrane/membraamplaat/ Plate.	1	o.A.
35	8596-621-2001-0	Membranschalter/membraamschakelaar/switch	1	o.A.
36	P6885-A8-7-35	Passfeder DIN 6885 8x7x35/ Veer/spring	2	o.A.

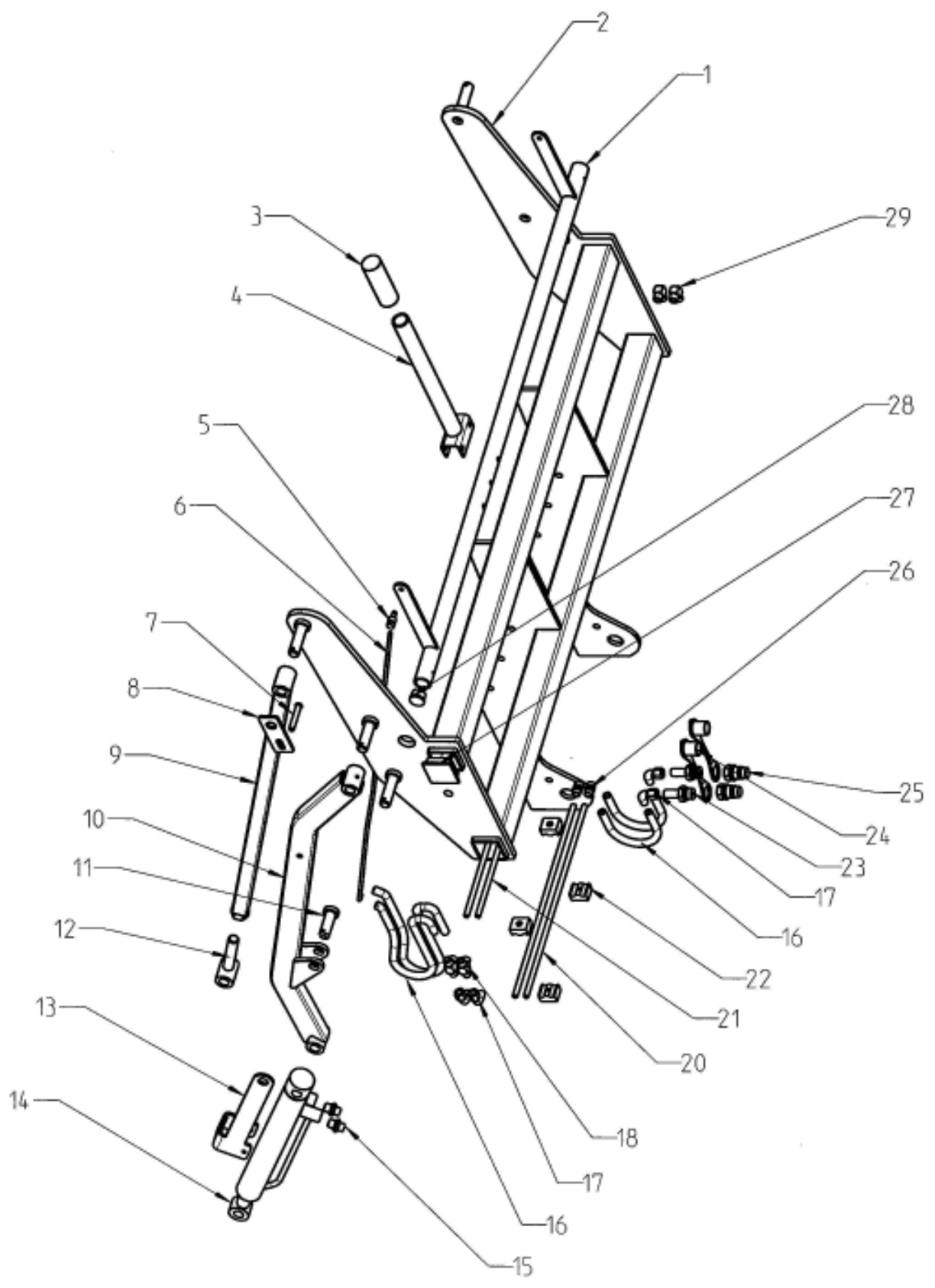
**Grasvanger /Gras- und Laubgebläse GLS 550 für Schlepper( 3/1/103**

Art.Nr.33.1713

<b>Pos.</b>	<b>Art.Nr.:</b>	<b>Bezeichnung/Omschrijving</b>	<b>Menge:</b>	<b>Bem.:</b>
37	P6885-A12-8-90	Passfeder DIN 688512x8x90/Veer/spring	1	o.A.
38	SE471-A25-012	Sicherungsring 25x1,2 DIN 471/ Ring/ring	1	o.A.
39	SE471-A30-015	Sicherungsring 30x1,5 DIN 471 /Ring/ring	1	o.A.
40	V704-140-0150-0	Sicherungsring 15x1 DIN 471 / Ring/ring	1	o.A.
41	FM-042-60	Sicherungsring 52x2DIN 472/ Ring/ring	2	o.A.
42	S0913-M08-020	Flügelschraube M8x20/ vleugelmoer/nut	2	o.A.
43	S0933-M08-010	Sechskantschraube M8x10 / zeskantschroef/nut	6	o.A.
44	S0933-M08-020	Sechskantschraube M8x20 / zeskantschroef/nut	12	o.A.
45	S0603-M08-020	Schloßschraube M8x20 / Nylonschroef/nylonnut	4	o.A.
46	M0985-M08	Stoppmutter M08 DIN 985 / Stopmoer/bolt	18	o.A.
47		U-Scheibe A08 DIN 125 / U-profiel/U-profile	32	o.A.
48		K-Scheibe A08 DIN 127 / K-profiel/K-profile	4	o.A.
49	M0985-M10	Stoppmutter M10 DIN 985 / Stopmoer/nut	1	o.A.
50		U-Scheibe A10 DIN 125 / U - profiel/U-profile	1	o.A.
51	S0603-M12-030	Schloßschraube M12x30 / Schroef/nut	2	o.A.
52	S0933-M12-035	Sechskantschraube M12x35 / zeskantschroef/nut	5	o.A.
53	S0603-M12-040	Schloßschraube M12x40 / Schroef/bolt	4	o.A.
54	M0985-M12	Stoppmutter M12 DIN 985/ Stopmoer/nut	10	o.A.
55		Federring A12 DIN 127 / Ring/ring	1	o.A.
56		U-Scheibe A12 DIN 125 / U-profiel/u-profile	20	o.A.
57	1305-241-0010-0	Federstecker 2,5 mm /Pin/pin	1	o.A.
58	1421-502-0020-0	Klappstecker 10 mm / Pin/pin	3	o.A.
59	3AL 002 952-011	Horn / Hoorn/buzzer	1	o.A.
60	0 332 204 125	Relais / relais/relay	1	o.A.
61	352221001	Sreckdose, 1 polig /1 polige doos/1p assy	1	o.A.
62	986352000	Stecker, 1 polig / 1 polige stekker/1p assy	1	o.A.
63	FM-042-20	Schmiernippel M8x1 / smeernippel/greasenipple	1	o.A.
64	GPN260Q3030	Kunststoffstopfen 30x30 / Rubber stopper/stopper	2	o.A.
65		U-Scheibe A16 DIN 125 / U-profiel/u-profile	2	o.A.
66		Spannstift 8x50 / Spanstift/groove pin	2	o.A.
		Splint 3,0 x 32	1	o.A.

o.A.: ohne Abbildung

Art.Nr.:	ISEKI - Ersatzteilliste	Ausgabe1
30.620	Grasfangcontainer GLS 550H	Blatt 1
		März 2003

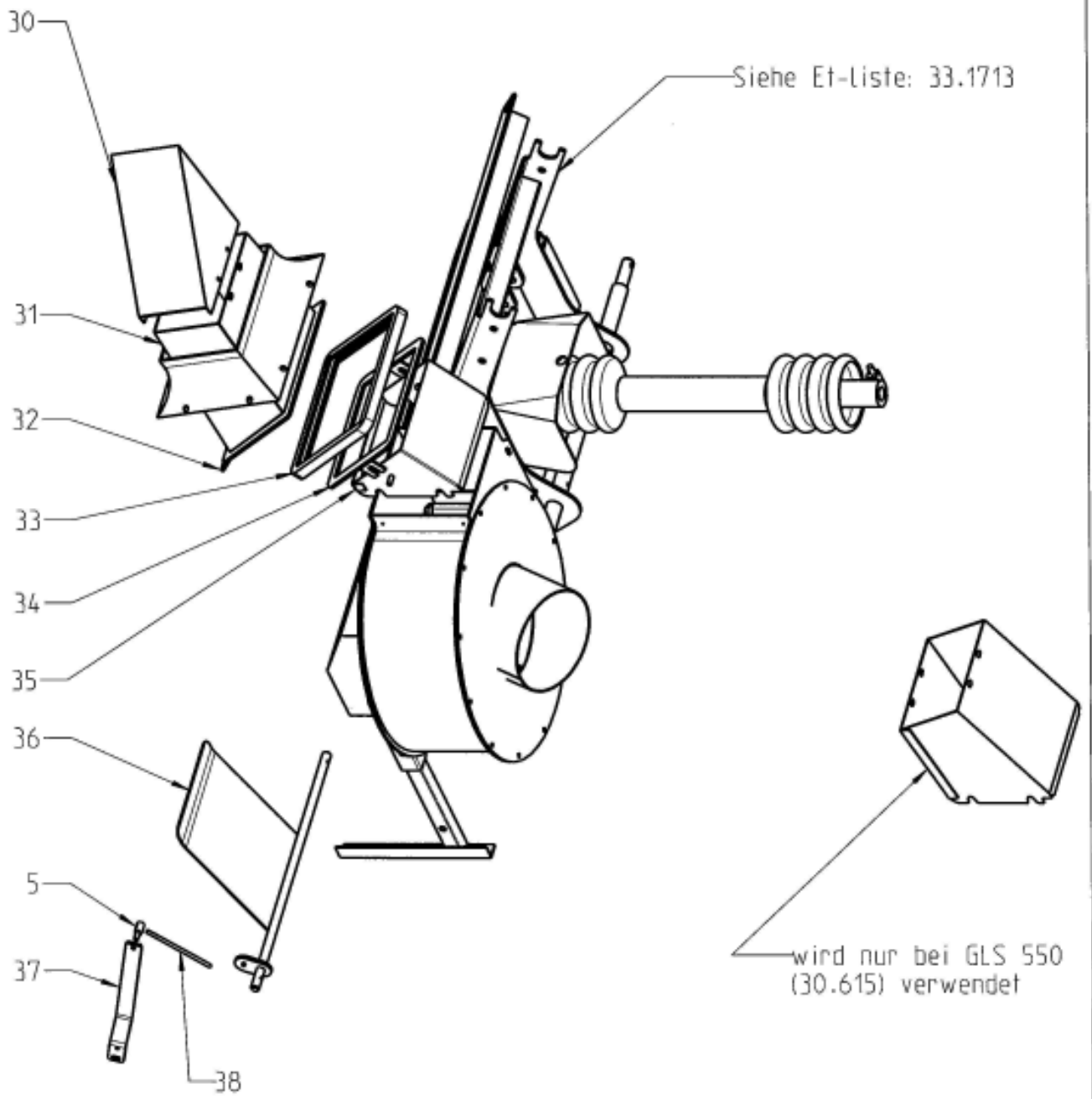


1:10

Art.Nr. 30.620

<b>Pos.</b>	<b>Art.Nr.:</b>	<b>Bezeichnung/ Omschrijving</b>	<b>Menge:</b>	<b>Bem.:</b>
1	I-430-1066	Öffnungsrahmen für GLS 550 / Openingsarm/rod	1	
2	I-430-1071	Tragrahmen für GLS 550 / Frame/Frame	1	
3	233-000.033.110	Handgrif D34 / Handgreep/Handel	1	
4	I-420-1033	Öffnungshebel zu GLS 550 / Hendel/Handel	1	
5	I-313-6214	Bolzen / Moeren/ Bolt	4	
6	I-215-0890	Zugstange D6x890/M6x75 / Staaf/ rod	2	
7	1310-240-0030-0	Bundbolzen 10/54/3,3 / Moeren / Nut	2	
8	I-225-1375	Blech / Net /Grill	2	
9	I-430-3146	Hubstrebe für GLS 550 / Parallelarm	2	
10	I-430-0034	Hubarm für GLS 550 / Hefarm / Hubarm	2	
11	I-313-1154	Bolzen / moeren / Bolt	2	
12	I-420-4000	Gelenkauge / Paralleloog /Paralleleye	2	
13	I-420-2128	Halter für Klappenkinematik / Houder / support	1	
14	HY-Z02-38	Hydraulikzylinder / Hydrauliekcylinder / Hydr.cyl.	2	
15	HY-V46-03	Verschraubung, GE10 LR3/8 / adapter /adaptor	4	
16	HY-S01-31	Hydraulikschlauch HSEC 08.520 / slang / Tube	6	
17	HY-V29-03	Schwenkwinkel 10L / elleboogstuk /ellebow	2	
18	HY-V14-07	T-Verschraubung / T-adapter	2	
20	I-466-2033	Hydraulikleitung /Hydr.leiding / Hydr.hose	2	
21	I-466-2032	Hydraulikleitung / Hydr.leiding / Hydr.hose	2	
22	HY-B04-01	Rohrhalter 10, doppelt / Houder /Support	5	
23	HY-V17-10	Schottverschraubung, SV-10L-M22x1,5 / Adapter	2	
24	HY-K02-03	Staubmuffe Gr.3 / Mof / adapter	2	
25	HY-K02-01	Argusstecker Gr.3 / Argusstekker / adapter	2	
26	HY-V08-10	Rohrverbinder / verbinding / connection	2	
27	GPN 270 Q 6060	Kunststoffstopfen 60x60x4 / Dop / Cap	4	
28	GPN 320 GL 300	Lamellenstopfen D30 / Dop / Cap	2	
29	HY-V12-07	Winkel, fest W10L / L-adapter / L-adapter	2	

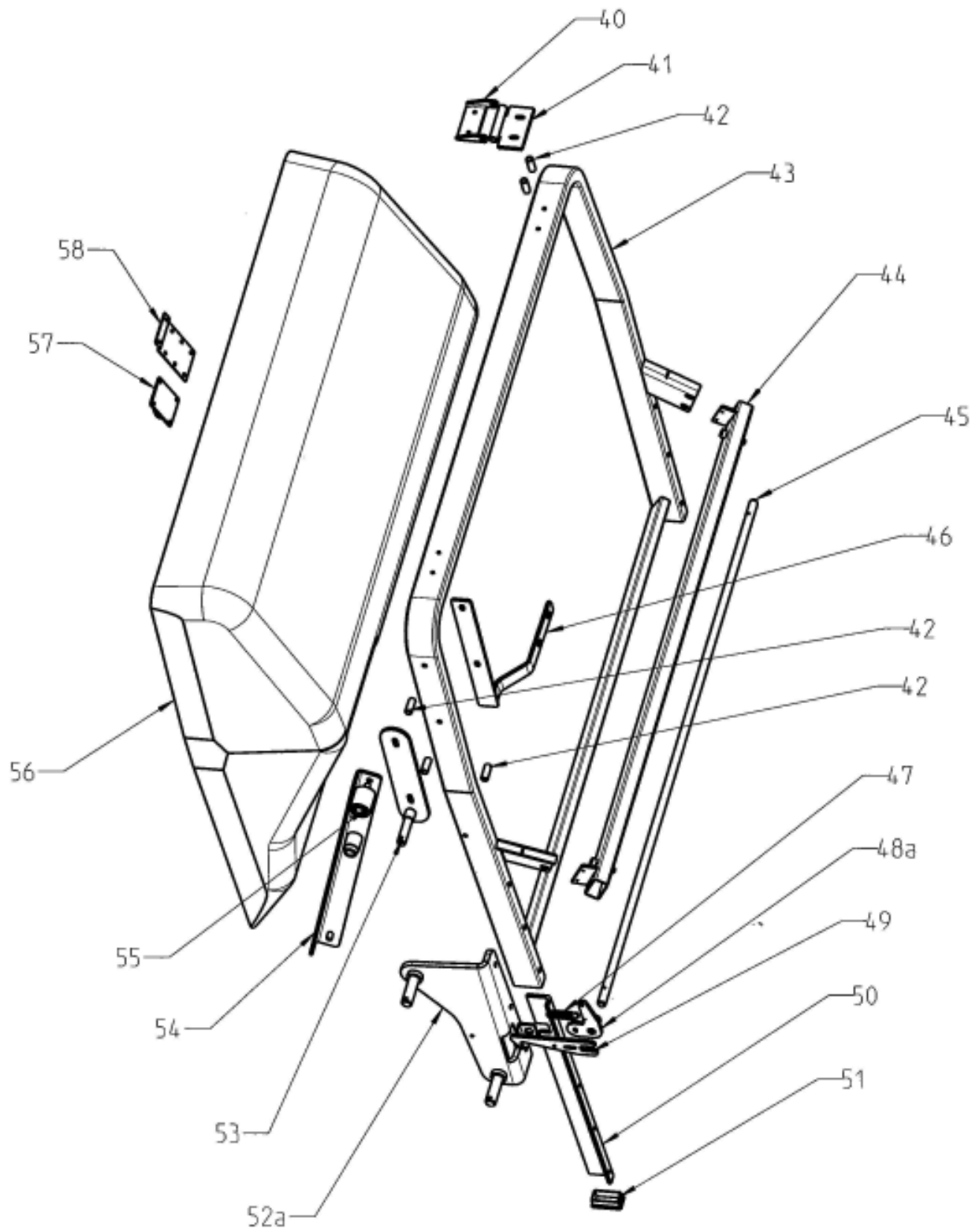
Art.Nr.:	ISEKI - Ersatzteilliste	Ausgabe1
30.620	Grasfangcontainer GLS 550 H	Blatt 2 März 2003



Art.Nr. 30.620

<b>Pos.</b>	<b>Art.Nr.:</b>	<b>Bezeichnung/Omschrijving</b>	<b>Menge:</b>	<b>Bem.:</b>
30	I-415-0021	Haube für Windkanal / Windkanaal / Canal	1	
31	I-417-1041	Gebläsekanal für GLS 550 / Blaaskanaal / Outlet canal	1	
32	I-365-1002	Tuchabdichtung / Doekdichting / Clothing	1	
33	461 0051	Gummiabdichtung / Rubber dichting /Rubber joint	0,95 m	
34	I-417-1043	Stützring, kurz / Ring /Ring	1	
35	I-417-1042	Einblaskanal, kurz / Kort blaaskanaal / Short Canal	1	
36	I-410-0415	Gebläseabdeckung für GLS 550 / Veiligheidsklep/ Security plate	1	
37	I-420-1037	Hebel / Arm / Arm	1	
38	I-303-0614	Gewindestange, M6x140 / stang / Rod	1	

Art.Nr.:	ISEKI - Ersatzteilliste	Ausgabe1
30.620	Grasfangcontainer GLS 550H	Blatt 3 März 2003



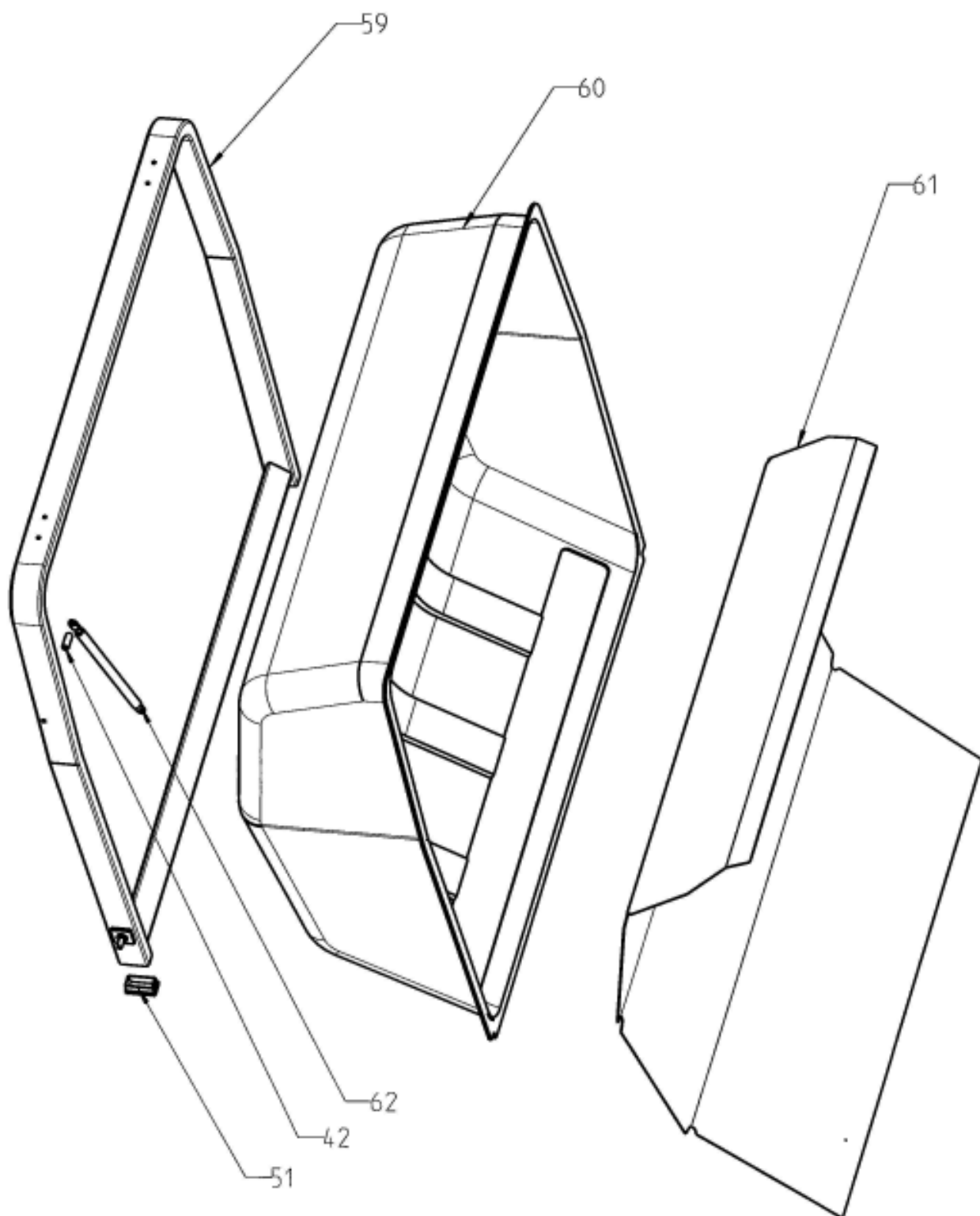
1:10

Art.Nr. 30.620

<b>Pos.</b>	<b>Art.Nr.:</b>	<b>Bezeichnung/Omschrijving</b>	<b>Menge:</b>	<b>Bem.:</b>
40	I-420-0007	Schanier / Scharnier / Hinge	2	
41	I-420-0010	Schanier / Scharnier / Hinge	2	
42	I-311-1050	Distanzbüchse / spatiering / Spacer	12	
43	I-430-1070	Rahmen, Front zu GLS 550 / Frame Vooraan / Frame front	1	
44	I-430-1072	Tragrohr / Draagarm / Rod	1	
45	I-430-0004	Verbindungsstange / Verbindungsarm / Arm	1	
46	I-420-0102	Befestigung für Gebläsekanal / Bevestiging /Support	1	
47	1411-181-0380-0	Feder / Veer / Spring	2	
48a	I-420-2124	Hebel für GLS 550, rechts / hendel rechts/Handel R	1	
48b	I-420-2125	Hebel für GLS 550, links / hendel links/Handel L	1	
49	I-420-0008	Fankhaken / Sluithaken / Hook	2	
50	I-225-1374	Winkel, 25x6x50x600 / Winkel / Bracket	2	
51	GPN 270 R 6030	Rechteckstopfen, 60x30 / Plastic dop / Cap	4	
52a	I-430-1067	Hubplatte, rechts für GLS 550/ Support rechts/ Support R	1	
52b	I-430-1068	Hubplatte, links für GLS 550 / Support links Support L	1	
53	I-420-0100	Halter für Konsole GLS 550 / Houder / Bracket	1	
54	I-420-0098	Konsole für Schließkinematik/ Sluitmekaniek Support	1	
55	I-330-3002	Spannrolle mit Lager, D40/B45 / Spanrol/ Roller	1	
56	I-415-0002	Container-Front / container - voor	1	
57	8596-621-2001-0	Membranschalter / Membraamschakelaar/Switch	1	
58	I-420-2003	Halter, 75x1,5x125 / Plaat/ Plate	1	



Art.Nr.:	ISEKI - Ersatzteilliste	Ausgabe1
30.620	Grasfangcontainer GLS 550H	Blatt 4 März 2003



Art.Nr. 30.620

<b>Pos. Art.Nr.:</b>	<b>Bezeichnung/Omschrijving</b>	<b>Menge:</b>	<b>Bem.:</b>
59 I-430-1069	Rahmen, Heck für GLS 550 / Frame	1	
60 I-415-0050	Container-Heck, für Grasfangcontainer / Deur / Door	1	
61 I-415-0046	Lochblech, 1310x1x1150/10-12 / Net / Grill	1	
62 094 862	Gasdruckfeder / Gasdrukveer / Gasstrut	1	
I-532-1112	Kabelsatz für Füllstandsanzeige / Kabelset sensor Wiringset	1	



## **EG - Konformitätserklärung**

entsprechend EG-Richtlinie 89/392/EWG

Wir,

**ISEKI-Maschinen-GmbH Deutschland, Rudolf-Diesel-Str. 4-6, 40670 Meerbusch**  
erklären in alleiniger Verantwortung, daß das Produkt

### **ISEKI-Grassammeleinrichtung**

**TYP: GLS 550 H**

mit einem Füllvolumen von 550 L

ab Maschinenummer:

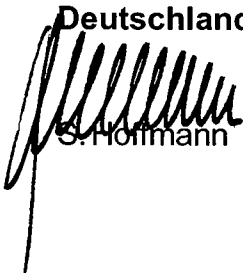
12 03 0001

den einschlägigen Sicherheits- und Gesundheitsanforderungen der  
EG-Richtlinie 89/392/EWG einschließlich der letzten Änderung 93/68/EWG entspricht.

Besonderer Hinweis: Die Grassammeleinrichtung darf nur an die von der Firma  
ISEKI-Maschinen GmbH Deutschland freigegebenen  
Gebläse angebaut werden.  
Für folgende Gebläse erteilt ISEKI die Freigabe:  
Art.Nr.: 33.1712, 33.1713 Gebläse für ISEKI-Kompaktschleper

Meerbusch, den 10.02.2003

**ISEKI-Maschinen-GmbH  
Deutschland**

  
S. Hoffmann



## **EG - Konformitätserklärung**

entsprechend EG-Richtlinie 89/392/EWG

Wir,

**ISEKI-Maschinen-GmbH Deutschland, Rudolf-Diesel-Str. 4-6, 40670 Meerbusch**  
erklären in alleiniger Verantwortung, daß das Produkt

### **Gras- und Laubsaugturbine GLS S/II**

ab Seriennummer: 03030001

Lüfterdurchmesser der Turbine: 440 mm  
Zapfwellentriebsdrehzahl: 540 U/min.

den einschlägigen Sicherheits- und Gesundheitsanforderungen der  
EG-Richtlinie 89/392/EWG einschließlich der letzten Änderung 93/68/EWG entspricht.

**Besonderer Hinweis:**

Der Gras- und Laubsauger darf nur an Kompaktschlepper mit Norm-Dreipunkt-Hydraulik Kat. I angebaut werden, die über eine einstellbare Zapfwellendrehzahl von 540 U/min. verfügen. Die zulässigen Achslasten der Zugmaschine sind zu beachten.

Für folgende ISEKI-Kompaktschlepper erteilt ISEKI die Freigabe: TXG, 2100, 3100

Meerbusch, den 22.01.2003

**ISEKI-Maschinen-GmbH  
Deutschland**

  
S. Hoffmann





**Yvan Béal - 21, av. de l'Agriculture - B.P. 16  
Z.I. du Brézet - 63014 Clermont-Ferrand Cedex 2  
Tél : 04 73 91 93 51 - Télécopie : 04 73 90 23 11  
[www.yvanbeal.fr](http://www.yvanbeal.fr) - E-mail : [info@yvanbeal.fr](mailto:info@yvanbeal.fr)  
R.C.S. Clermont-Fd B 304 973 886 - S.A.S. au capital de 612 000 €**